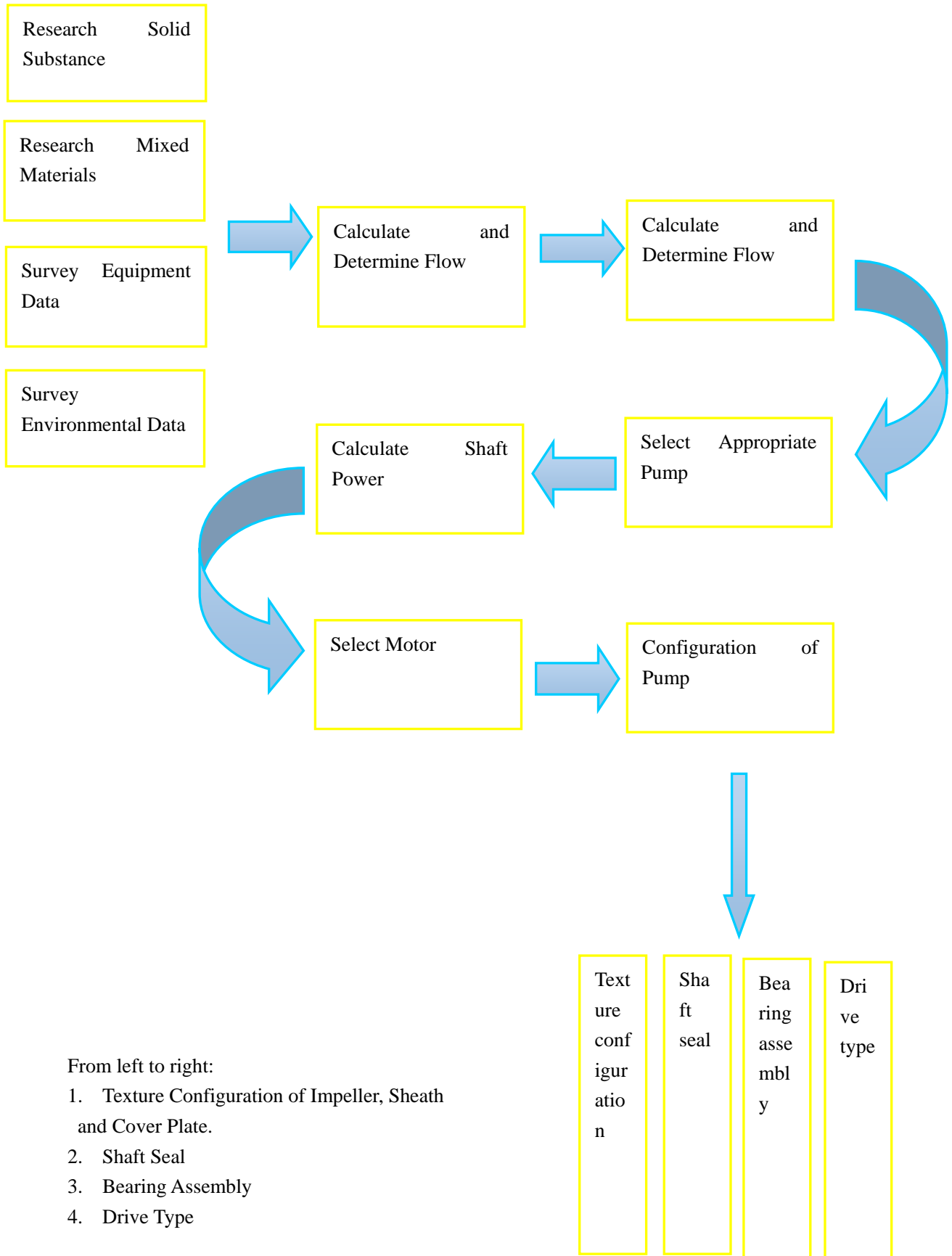




### NZJV Vertical Double Suction Slurry Pump

#### Customer Services of Vertical Double Suction Slurry Pump



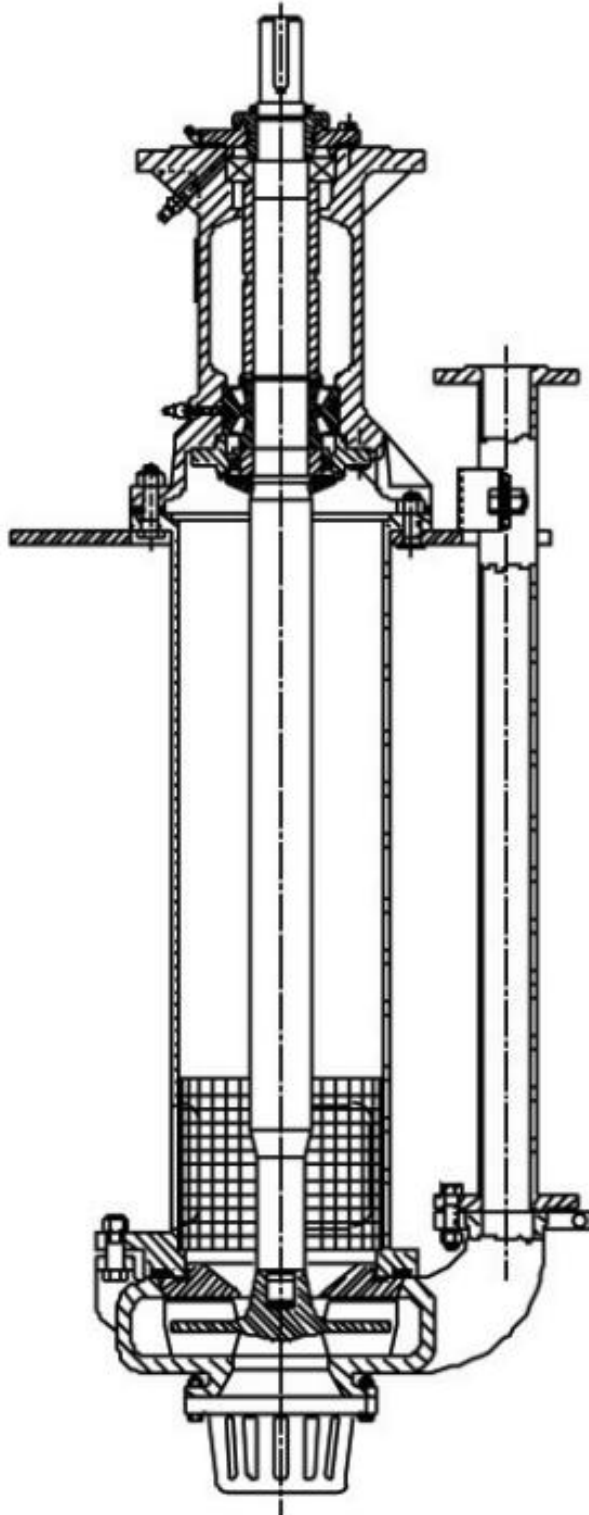
### Contact Us

Add: No.4 Industrial Rd., Shangrao Economic Development Zone, Shangrao City, Jiangxi Province, China  
 Tel: +86-793-8469669 or +86-793-8457309  
 Fax: +86-793-8461032  
 Email: penghuafen@naipu.com.cn



### Components

Vertical double suction slurry pump is mainly composed of pump casing, impeller and back cover plate.



---

### Contact Us

Add: No.4 Industrial Rd., Shangrao Economic Development Zone, Shangrao City, Jiangxi Province, China  
Tel: +86-793-8469669 or +86-793-8457309  
Fax: +86-793-8461032  
Email: penghuafen@naipu.com.cn



**Parameters of Vertical Double Suction Slurry Pump**

No.		1	2	
Relevant Data about Wear Resistant Slurry Pump	Pump Model	100HEV.NZJV.R	150HFV.NZJV-R	
	Interface	Entrance (mm)	175	740
		Exit (mm)	100	150
	Material	Impeller	ELAST	ELAST
		Liner	ELAST	ELAST
	Data of Impeller	Impeller Parts Number	V-E10015.R	V-F15015-R
		Diameter (mm)	390	480
		Dia. of Cutting Impeller (mm)	390	480
		Impeller Form	Open	Open
		Number of Blades	5	5
		Max. Accepted Particle Diameter (mm)	32	45
	Working Data	Flow (m <sup>3</sup> /h)	108	215
		Lifting Height (m)	12.10	16.2
		Rotation Speed (rpm)	710	710
		Efficiency (%)	59.14	51.75
		NPSHr (m)	0.00	0.00
		Medium Proportion Sm	1.11	1.11
	Shaft Seal	Shaft Seal Form		
		Sealing Liquid Flow (m <sup>3</sup> /h)	0	0
		Sealing Liquid Pressure (m)	0	0
		Sealing Liquid Interface		
	Bearing Assembl y	Model	HEV	HFV
		Bearing of Drive End	NU2224EC	NU310EC
		Bearing of Pump End	T90381	THVS26749
	Weight	Pump (kg)	627	1180
		Depth (mm)	1500	1600
		Shaft Extension Size (mm)	80-170	100-210

**Contact Us**

Add: No.4 Industrial Rd., Shangrao Economic Development Zone, Shangrao City, Jiangxi Province, China  
 Tel: +86-793-8469669 or +86-793-8457309  
 Fax: +86-793-8461032  
 Email: penghuafen@naipu.com.cn